

EMS and IVDA

Could a Safe Injection Facility Have an Impact on EMS Use In San Francisco

The SFFD HOME Team

- Started in October 2004 by order of Mayor Newsom
- Located within SFFD EMS
- Joint effort of SFFD, SFDPH, SF DHS
- Engages in both outreach and planning



EMS Experience with IV Drug Use

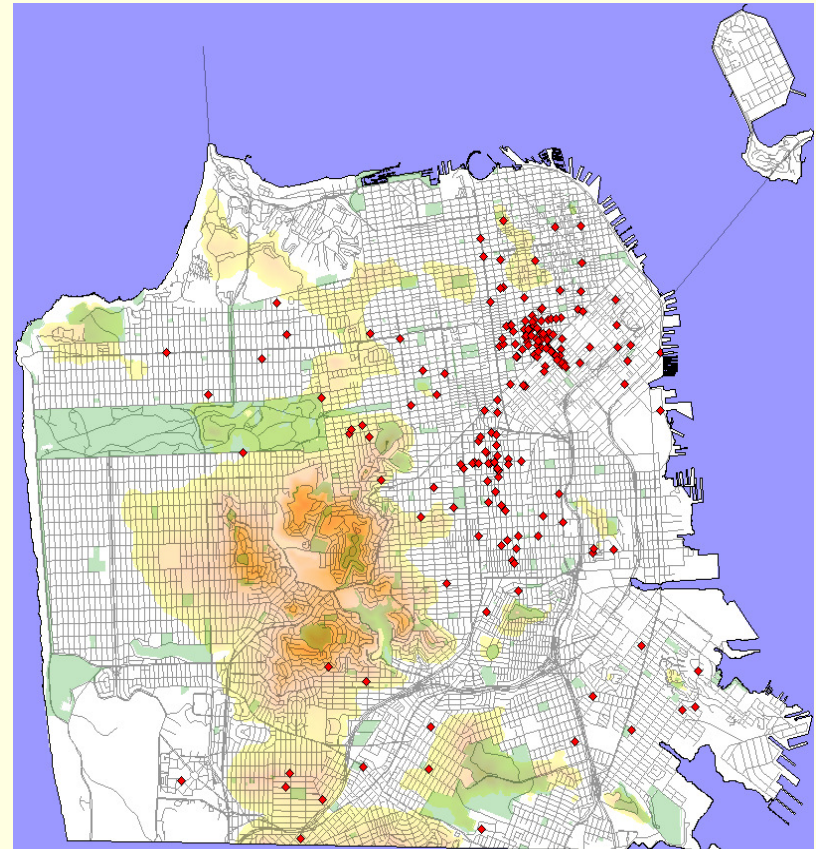
- Overdose
- Comorbid Conditions
 - Abscesses
 - Diseases associated with long-term drug use
- Calls Associated with the Drug Trade
 - Penetrating Trauma
 - Assaults
- Contributing Factor in Frequent EMS Use

SFFD/EMS Responses for ODs 7/1/06 – 6/30/07

- Total Responses in 2006 = 76,400
- Primary Impression OD Nonspecific= 9900
- Primary Impression OD Pharm = 255
- OD Depressant = 282
- OD Stimulant = 237
- OD Other = 106
- OD Alcohol = 2000
- Derived from LEMSYS Data

Incidents of Death by OD in SF

- Largely concentrated in Tenderloin and Mission
- May occur indoors or outside
- Steady decline over the past decade (after a peak in 1995)
- Approx 40 in 2004

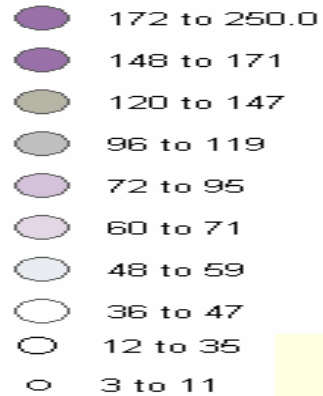


EMS and Trauma July and Aug 2007

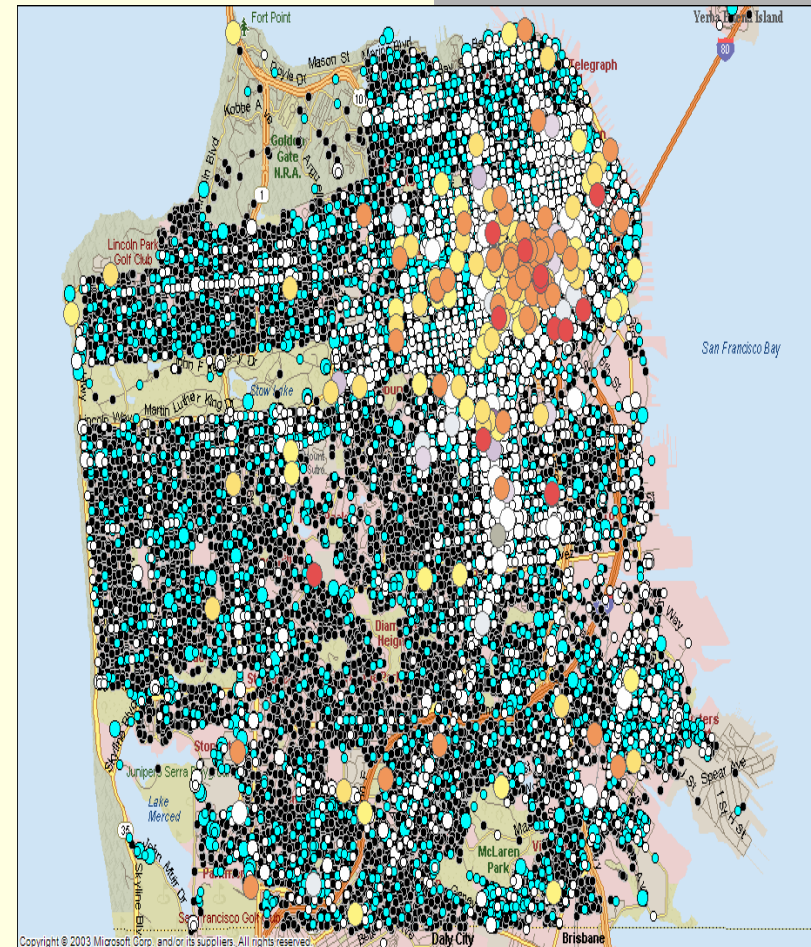
- Derived from admit data to SFGH
- July 2007 = 158
 - Penetrating Trauma = 30%
 - Blunt = 68%
- August 2007 = 174
 - Penetrating = 22%
 - Blunt = 78%

SFFD Incidents 2004-05 (All)

Incidents at Intersections



Incidents at Addresses



SFFFD High Volume Locations

2004-05



Incident Frequency at Intersections

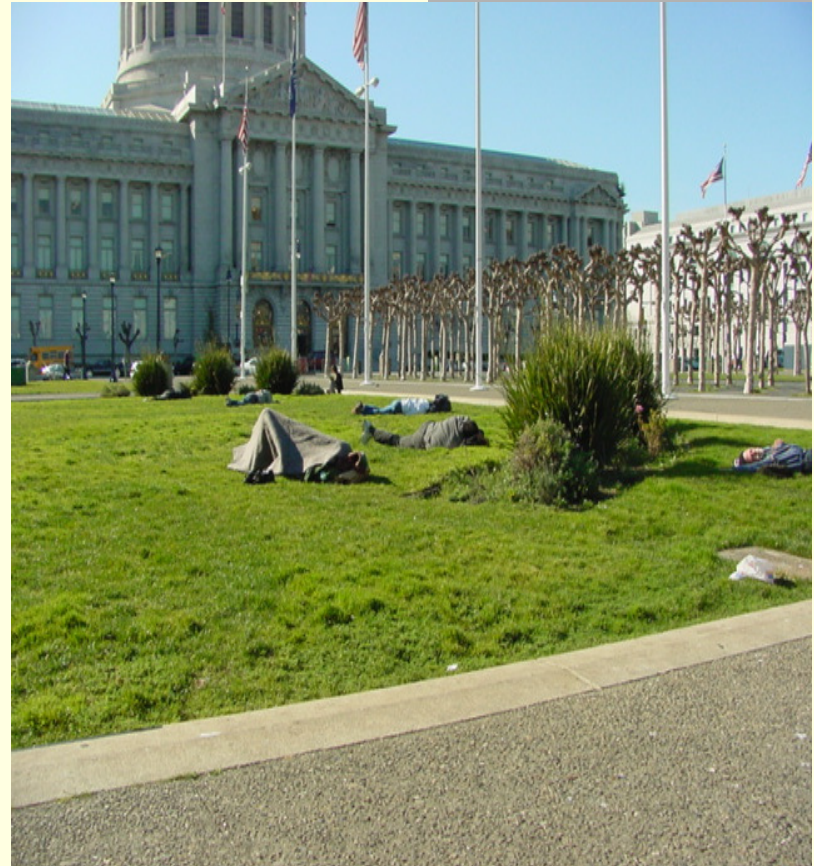
- 172 to 250 Every Other Day
- 148 to 171
- 120 to 147 Three per Week
- 96 to 119
- 72 to 95
- 60 to 71
- 48 to 59 One per Week
- 36 to 47

Incident Frequency at Addresses

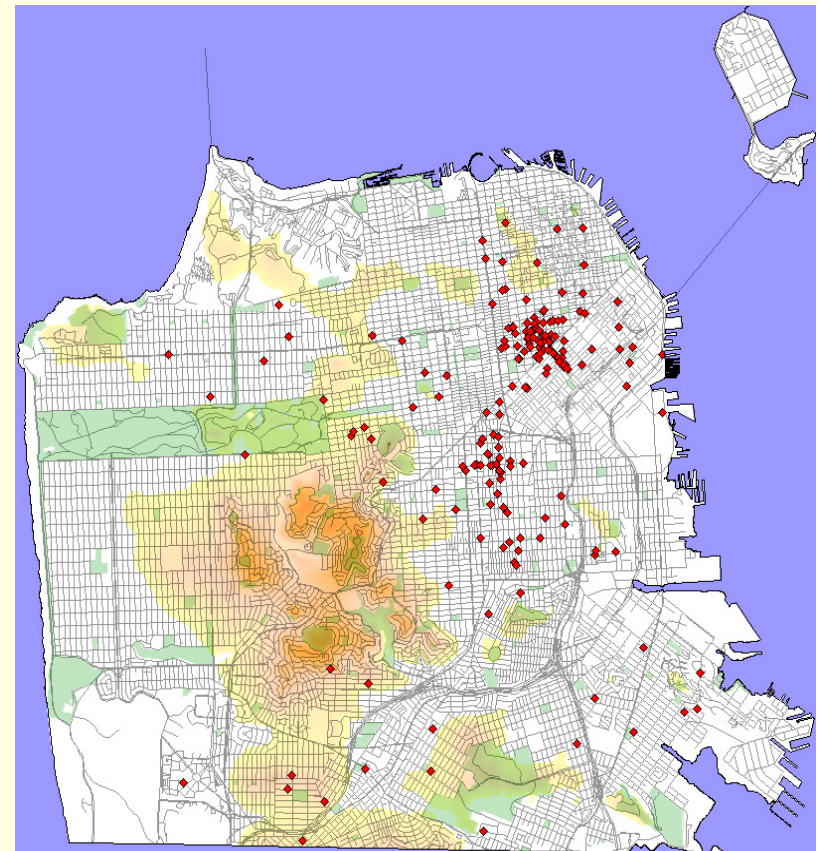
- 172 to 372 Every Day
- 148 to 171
- 120 to 147 Three per Week
- 96 to 119
- 72 to 95
- 60 to 71
- 48 to 59 Once per Week
- 36 to 47

Demographics of High Users of EMS

- Typically male
- Homeless
- Chronic Inebriate
- Comorbid mental illness
- Comorbid medical conditions
- Usually 40-60 yrs
- High mortality
- Only 2 out of 30 top users known to have significant IVDA hx



Co-occurrence of Frequent EMS Use and OD Deaths



Mitigating A Public Health Problem

- Which of the previous problems will a safe injection site address
- Overdose
- Comorbid Conditions
- Calls Associated with the Drug Trade
- Frequent EMS Use

Conclusions

- Deaths from overdoses are declining each year in San Francisco
- Overdoses continue to comprise a significant number of responses for SFFD
- The drug trade has a devastating impact on neighborhoods and any program seen as possibly encouraging (or at least not discouraging) it faces (and should) hurdles in coming to fruition